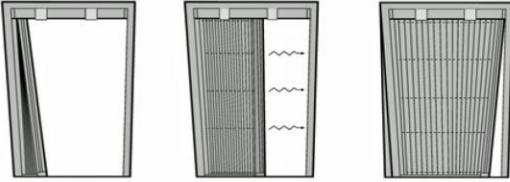


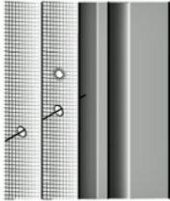
Troubleshooting

The sliding bar is tilted and does not move smoothly. Alternately, the sliding bar and stile post are not parallel and the pleated net does not fold properly. The screen door is too difficult (or easy) to open and close. There is a gap between the sliding bar and the door stop.



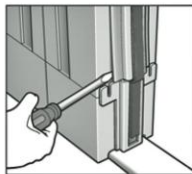
Adjust the wire. (See "Adjusting the Wire Guide")

I was using a knife and accidentally cut the pleating net or the wire going through it. Alternately, I accidentally placed a cigarette against the net and melted a small hole through it.

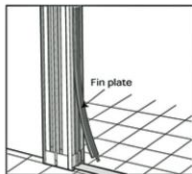


Due to the product's configuration, the pleated net cannot be replaced by itself. The entire screen door unit must be replaced. Consult your dealer. Small holes may be covered with commercially available patches.

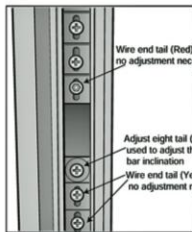
Adjusting the wire Guide



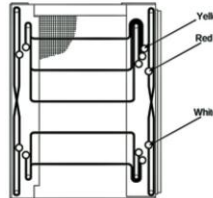
- 1. Remove the fin plate**
 - The screw that adjusts the sliding bar inclination is located on the inside of the sliding bar itself. To adjust it, you must first remove the fin plate from the sliding bar.
 - Insert a screwdriver into the lower of the gap between the fin plate and sliding bar, and remove the fin plate with lifting it.



- Hold the part that has come loose and pull from the bottom all the way to the top to remove the fin plate completely.

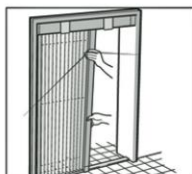


- Check the positions of the screw which adjusts the sliding bar inclination and the screw which adjusts the wire tension.

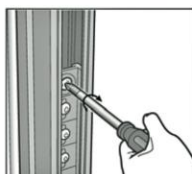


- 2. Adjust the inclination of the sliding bar.**

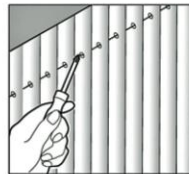
- Loosen the screw of the white adjust eight uail.
Note: There is a nut on the other side of the screw. Loosening the screw too far will cause the nut to come loose, so be careful not to do this.



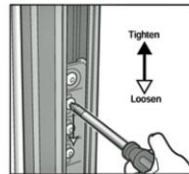
- Adjust the inclination of the sliding bar so it is straight.



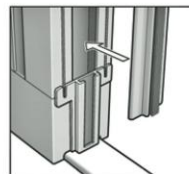
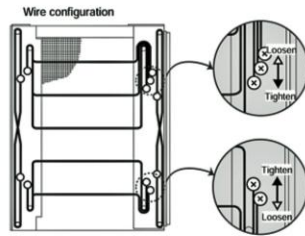
- Tighten the screw of the white adjust eight tail.
Note: Do not tighten the screw too much or use an electric screwdriver, as this may damage the screw or the components.
After adjusting the sliding bar inclination, be sure to check the tension of all of the wires running through the pleated net and adjust if necessary. (See step 3 "Adjust the wire tension" below.)



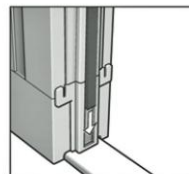
- 3. Adjust the wire tension.**
 - If the wires running through the pleating net are too taut or too loose, the screen door will be too difficult (or too easy) to open and close. Ideally, the wire should not be subjected to any tension.
 - To check the wire tension, insert the tip of a screwdriver or other object from the bottom and pull the wire out gently. Adjust each section of the wire so it is neither too taut nor too slack.



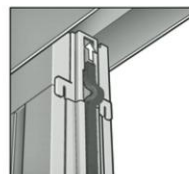
- Adjust screw in the wire end tail (yellow), reference wire configuration.
 - After adjusting, tighten the screws.
 - Move the sliding bar left and right and make sure the screen door moves smoothly and easily. If it does not, repeat the adjustment until the screen door moves smoothly.



- 4. Attach the fin plate.**
When the adjustment is complete, replace the fin plate on the sliding bar.
 - Align the ends of the fin plate and mohair and then press them into the groove at the bottom of the sliding bar.



- Slide the mohair down to insert the end into the groove on the scorpionfish.
 - Moving from bottom to top, press the fin plate into the sliding bar.



- Bend the extra mohair at the top and insert the end into the groove on the scorpionfish.